

DWG.NO. HW1386128

Tapped holes M8 (4holes)
Depth: see D for depth detail
Pitch: 1.25mm

Tube for Field bus Cable
(I.D. $\phi 12$) (In protective tubing)

Tapped holes M8 (4holes)
Depth: 16mm, Pitch: 1.25mm

6 $^{+0.012}_{-0.005}$ dia. (1hole)
Depth: 10mm
8 $^{+0.005}_{-0.002}$ dia. (1hole), Depth: 14mm
Tapped holes M8 (6holes)
Depth: 14mm, Pitch: 1.25mm

View B (Scale=1: 4)

Tapped holes M4 (4holes)
Depth: 3mm, Pitch: 0.7mm

Main key
(Upper side)
R-Axis, T-Axis

Internal user wiring connector type is
JL05-2A24-28SC (with cap)
Matching connector type is
JL05-6A24-28P (Provided by users)

Reserved Cable: 0.5mm x 23pins
Detail of Reserved Cable Connector

Detail of D
(Scale 1: 4)

Air2 outlet Rc3/8
with pipe plug
Air1 outlet Rc3/8
with pipe plug

Tapped holes M12 (4holes)
Depth: 20mm, Pitch: 1.75mm

Tapped holes M12 (4holes),
Depth: 20mm, Pitch: 1.75mm

Cover For Field bus Cable (I.D. $\phi 12$) (In Base)

Air1 inlet Rc3/8 with pipe plug
Air2 inlet Rc3/8 with pipe plug

Internal user wiring connector type is
JL05-2A24-28PC (with cap)
Matching connector type is
JL05-6A24-28S (provided by users)

Tapped holes M4 (4holes),
Depth: 3mm, Pitch: 0.7mm

Main key
(Upper side)

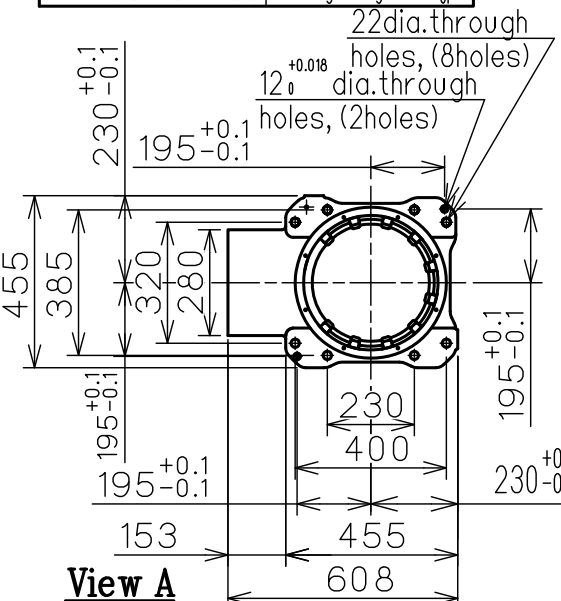
View C (Scale=1: 10)

Item	Model	MOTOMAN-GP50
Configuration	Articulated Robot	
Degree of Freedom	6	
Payload	Wrist	50 kg
	On U-arm	10 kg
Repeatability (*1)	± 0.07 mm	
Range of Motion	S-Axis (*2)	$-180^{\circ} - +180^{\circ}$
	L-Axis	$-90^{\circ} - +135^{\circ}$
	U-Axis	$-80^{\circ} - +206^{\circ}$
	R-Axis	$-360^{\circ} - +360^{\circ}$
	B-Axis	$-125^{\circ} - +125^{\circ}$
	T-Axis	$-360^{\circ} - +360^{\circ}$
Max Speed	S-Axis	3.14rad/s, 180°/s
	L-Axis	3.11rad/s, 178°/s
	U-Axis	3.11rad/s, 178°/s
	R-Axis	2.62rad/s, 150°/s
	B-Axis	2.62rad/s, 150°/s
Allowable Moment	T-Axis	3.49rad/s, 200°/s
	R-Axis	216N·m (22kgf·m)
	B-Axis	216N·m (22kgf·m)
Allowable Inertia (GD ² /4)	T-Axis	147N·m (15kgf·m)
	R-Axis	28kg·m ²
	B-Axis	28kg·m ²
Approx. Robot mass	585kg	
Protected structure	Body: IP65 Wrist: IP67	
Mounting method (*2)	Floor-mounted	
Ambient Conditions	Temperature	+15 to +45°C
	Humidity	20 to 80%RH (Non-condensing)
	Vibration	Less than 4.9m/s ² (0.5G)
	Altitude	1000m or less
	Others	<ul style="list-style-type: none"> Free from explosive or corrosive gas and liquid. Not to be splashed with oil. Not to be covered with dust. To be no material to influence the tip of oil seal made of butadiene acrylonitrile (NBR). Free from electrical noise.
Power Requirements	4.5KVA	
Controller	YRC1000	

*1 Repeatability is conformed to ISO 9283.
*2 When the manipulator is installed on a slope or a wall, the motion of S-axis will be limited.
*3 The manipulator is in the home position.

Type	Note
YR-1-06VX50-F00	Food-grade grease type

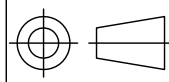
Units: mm



View A

Note:
1. All rights reserved.
2. Please note that the data is subject to be deleted without advance notice.
3. No warranty is given in relation to the data including the specification.
4. We are not responsible for any damages or loss caused by the use of the data.

FOR STUDY PURPOSE ONLY



SCALE 1:20

YASKAWA
株式会社 安川電機

Reference Drawing

TITLE MOTOMAN-GP50 (Food-grade grease type)
DIMENSION DIAGRAM

DRWN DATE Dec. 28. '18

DWG.NO. HW1386128

SIZE A 3